

# TWENTY YEARS OF DIALYSIS TREATMENT IN LOMBARDY



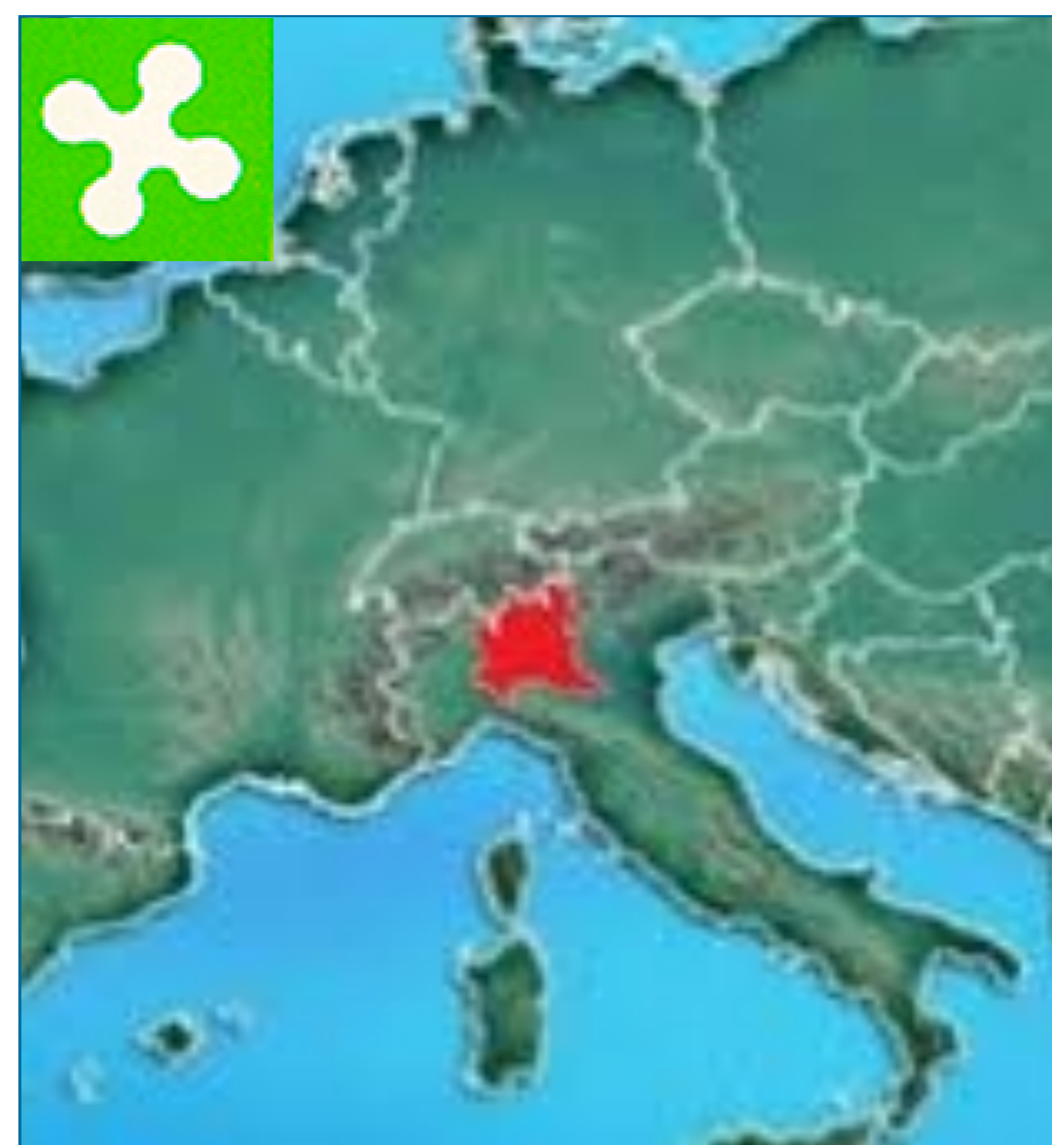
## EMERGING TRENDS FROM THE DATA OF

## THE LOMBARDY REGISTRY OF DIALYSIS AND TRANSPLANTATION (1992-2011)

E. Corghi, F. Conte, A. Limido, G. Pontoriero on behalf of Lombardy Registry of Dialysis and Transplantation.

### INTRODUCTION

The Lombardy Registry of Dialysis and Transplantation yearly collects data on CKD patients on dialysis treatment in Lombardy Dialysis Units (Northern Italy).



### AIM OF THE STUDY

We analysed the data collected from 1992 to 2011 looking for **TRENDS** in

- INCIDENCE**
- PREVALENCE**
- TREATMENT OPTIONS**

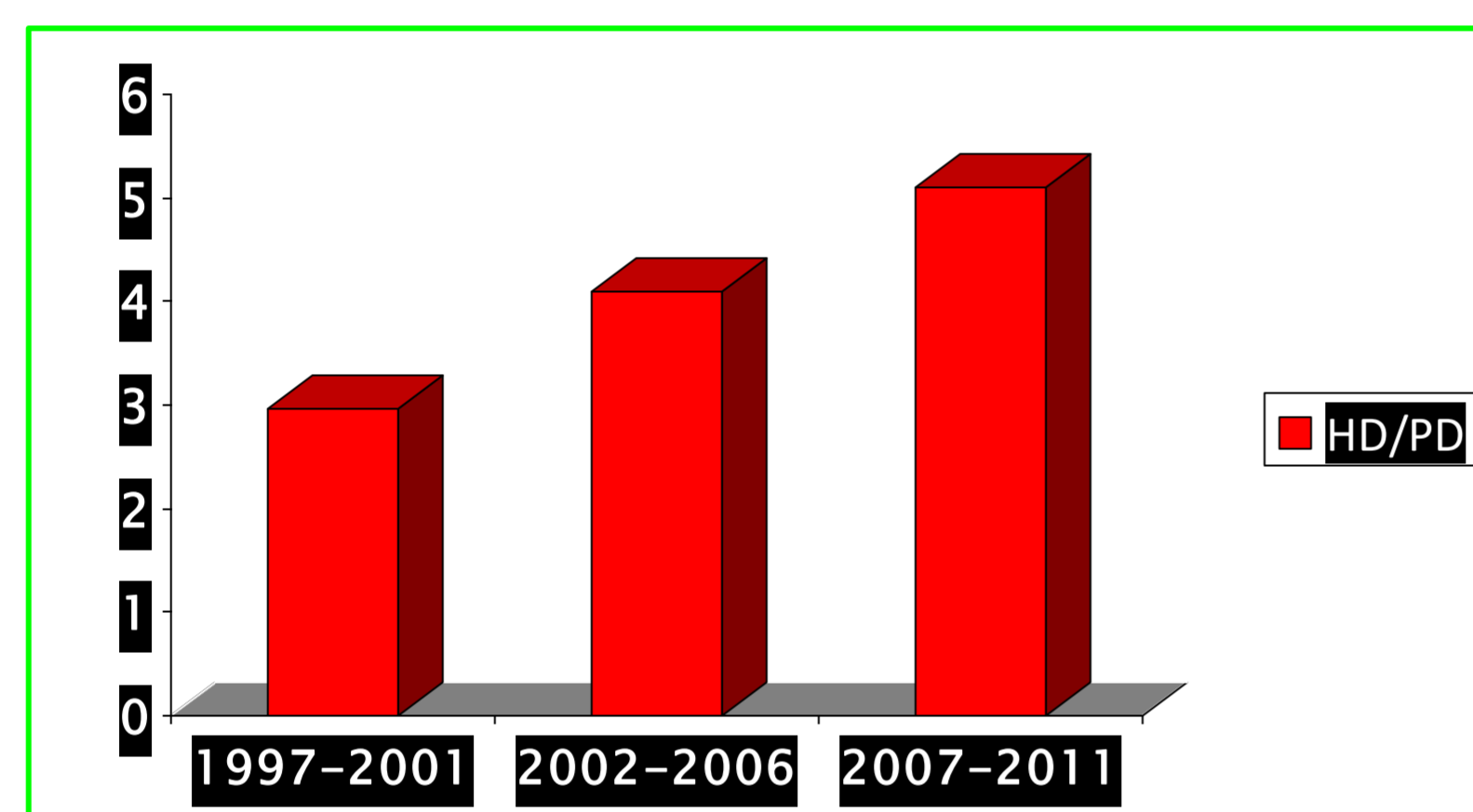
### METHODS

Data collection:  
 1992 - 2006 questionnaires  
 2007 - 2011 website www.nefrolombardia.it  
 The answer rate was 100%.  
 Modalities of dialysis treatment are available since 1997.

### RESULTS (2)

#### CHOICE OF STARTING TREATMENT (1997-2011)

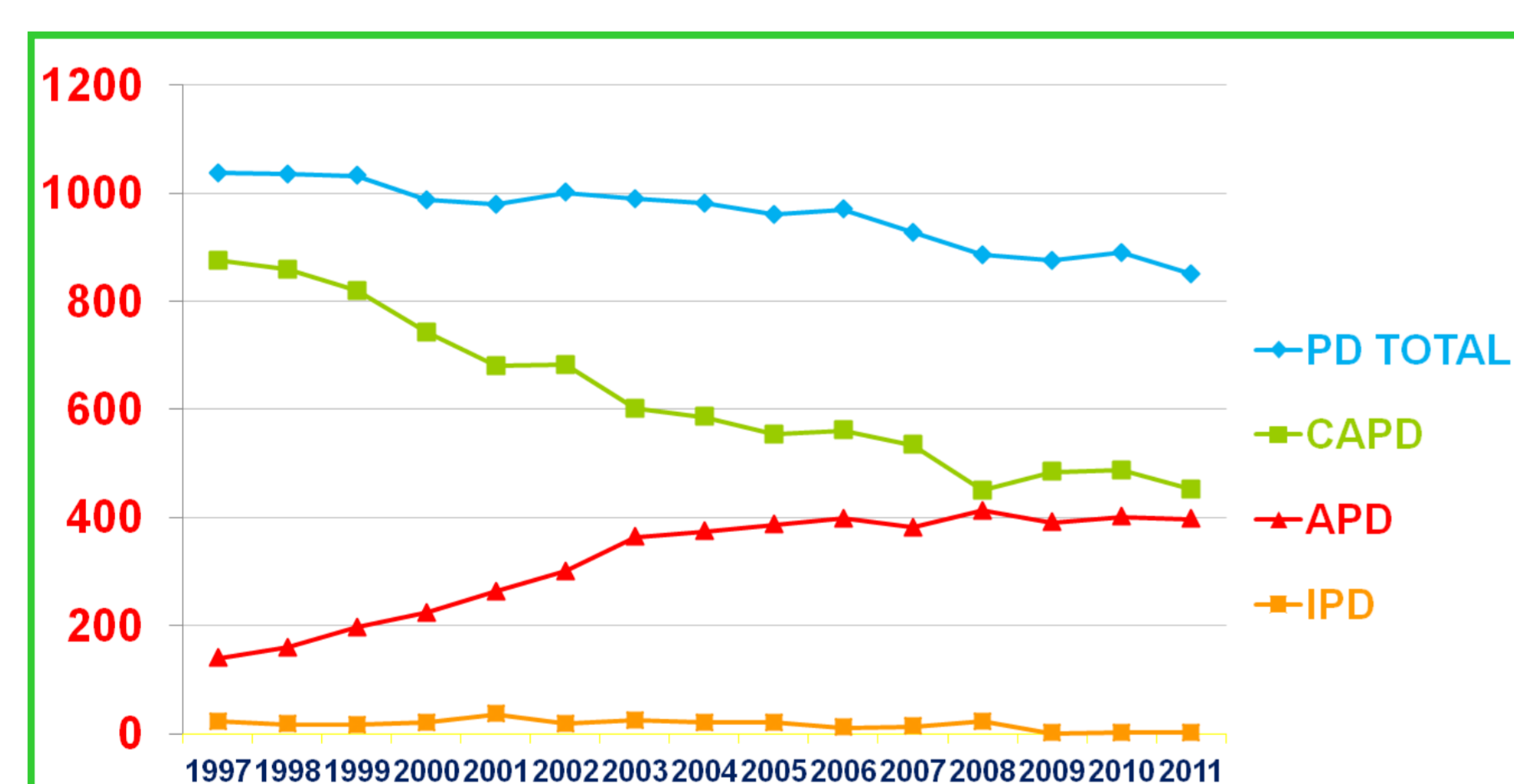
During this period, a larger number of incident patients started renal replacement treatment on extracorporeal (HD) as compared with peritoneal dialysis (PD), with a HD/PD ratio raising from 2.96 to 5.15



### RESULTS (4)

#### PERITONEAL DIALYSIS (PREVALENT PATIENTS 1997-2011)

PD progressively became less attractive. There was a progressive reduction of CAPD patients (exactly 424), in contrast to an increase of patients on APD (exactly 257). Consequently the PD patients rates decreased from 18.4% to 11.7%



### CONCLUSIONS

In summary, our data show a **continuous increase in**

- . No. of patients requiring dialysis
- . Hospital vs. limited care treatments
- . High efficiency vs. standard treatments.

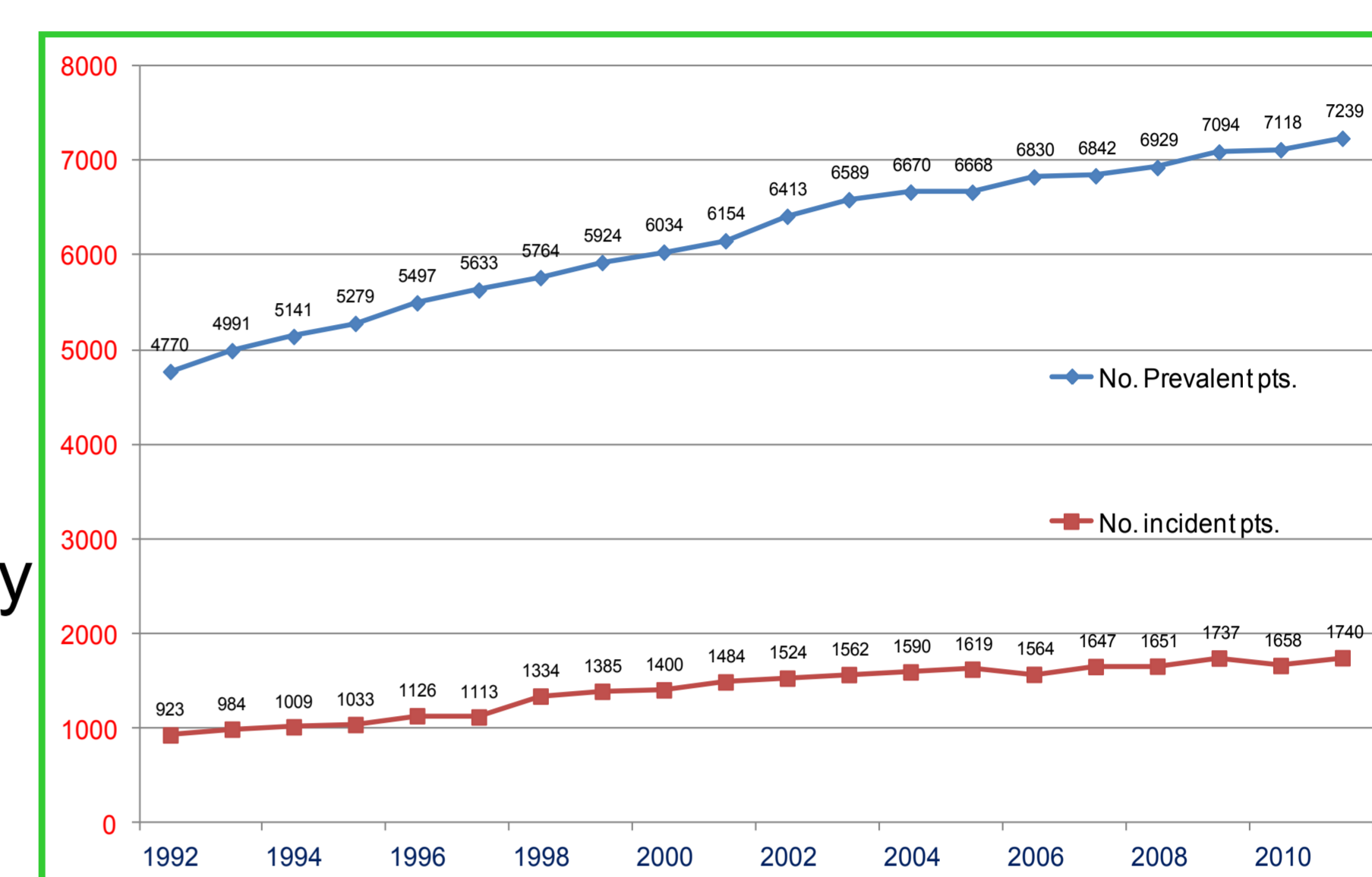
The costs of each treatment have declined over the years, but the increase in their number may result in higher costs and we should ask

- . How will the Public Health System be able to afford it ?
- . Should nephrologists change some of their policies in patient's choice, starting, organizing, delivering dialysis treatment?

### RESULTS (1)

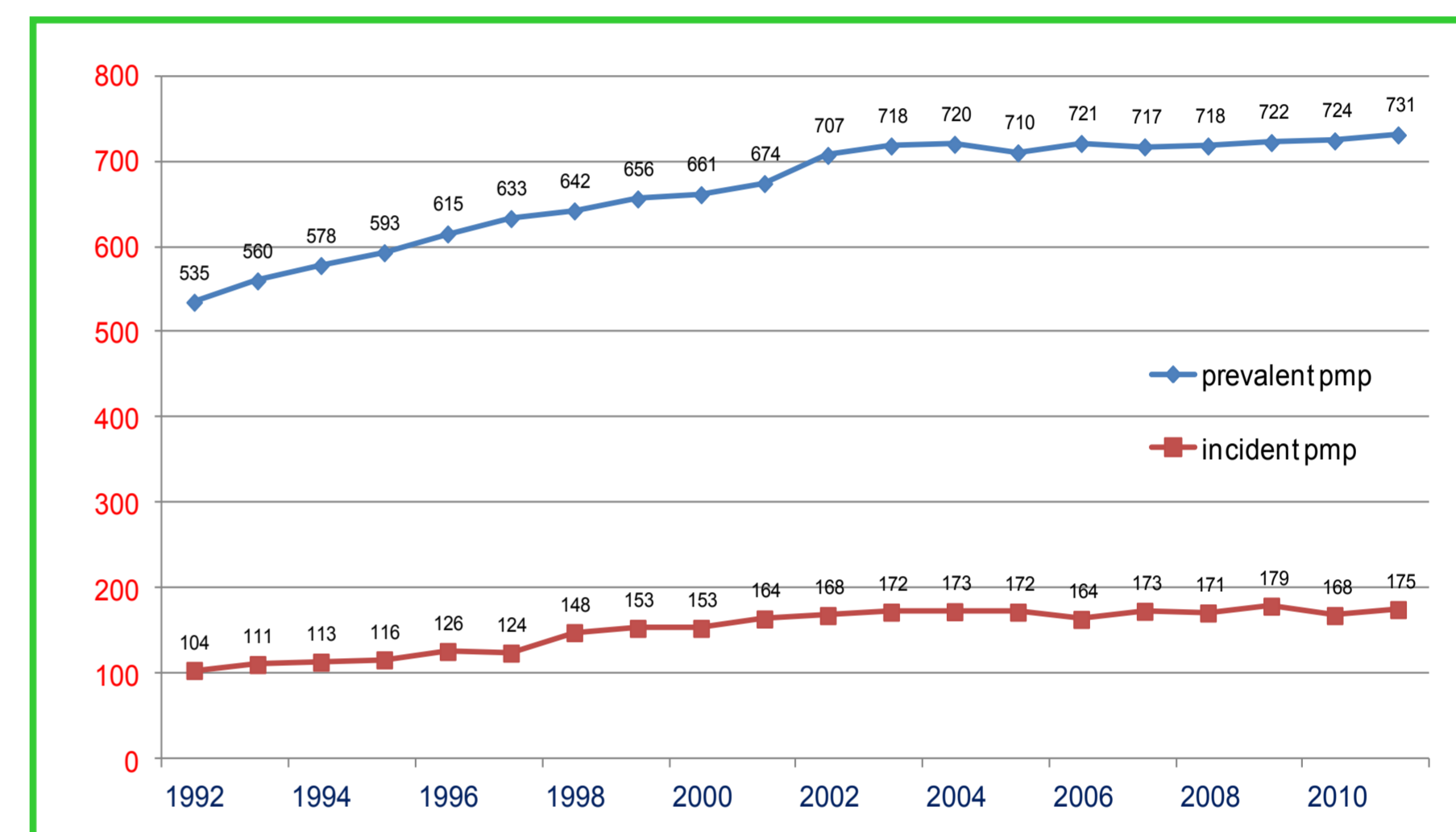
#### INCIDENCE AND PREVALENCE (1992-2011)

The number of incident and prevalent patients in dialysis has progressively increased from 1992 to 2011 (+ 98% and +58 % respectively), showing a peak of 1740 and 7239 pts. in 2011. Incidence and prevalence rates mainly raised in the first decade, because of a parallel increase in general population in the second one, mostly related to immigration from NO-EU countries.



#### Lombardy (Inhabitants)

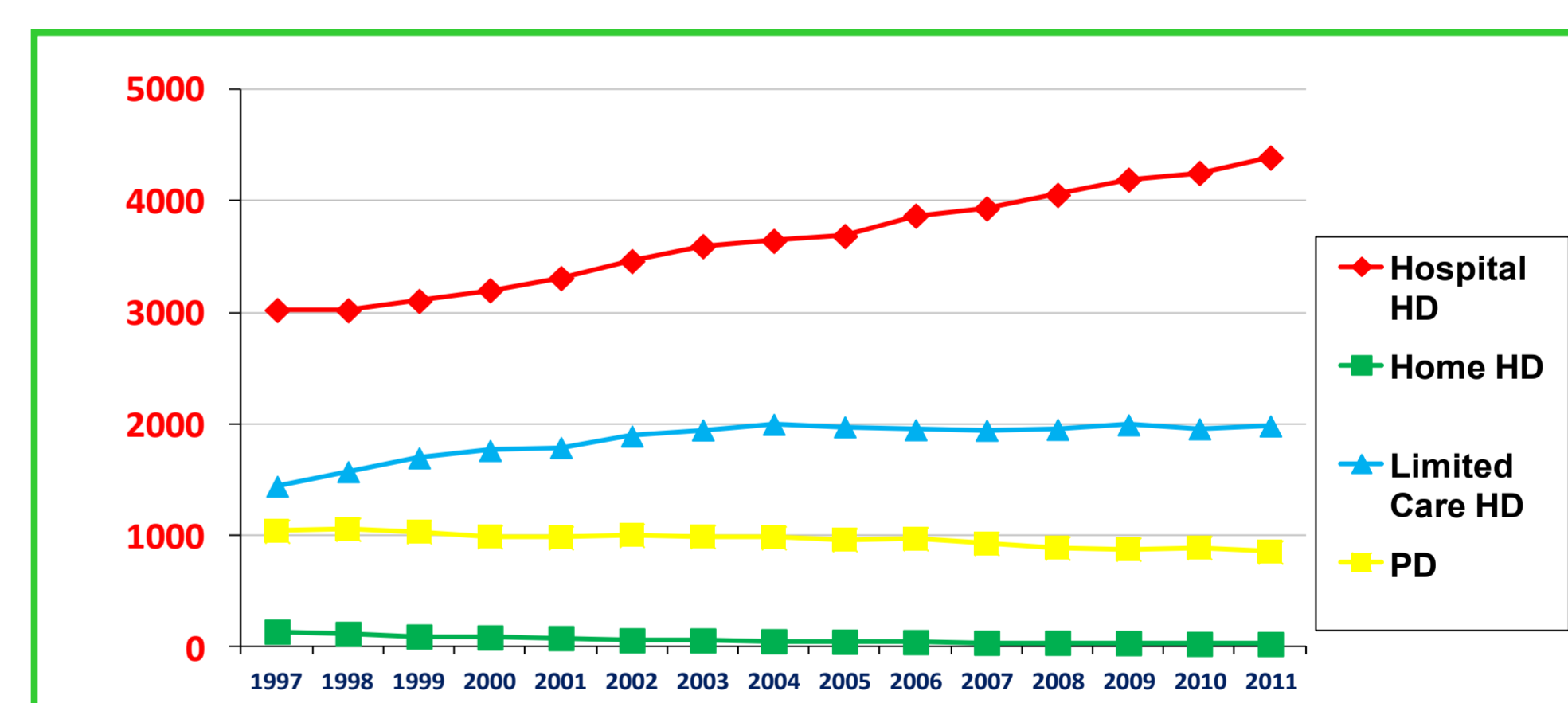
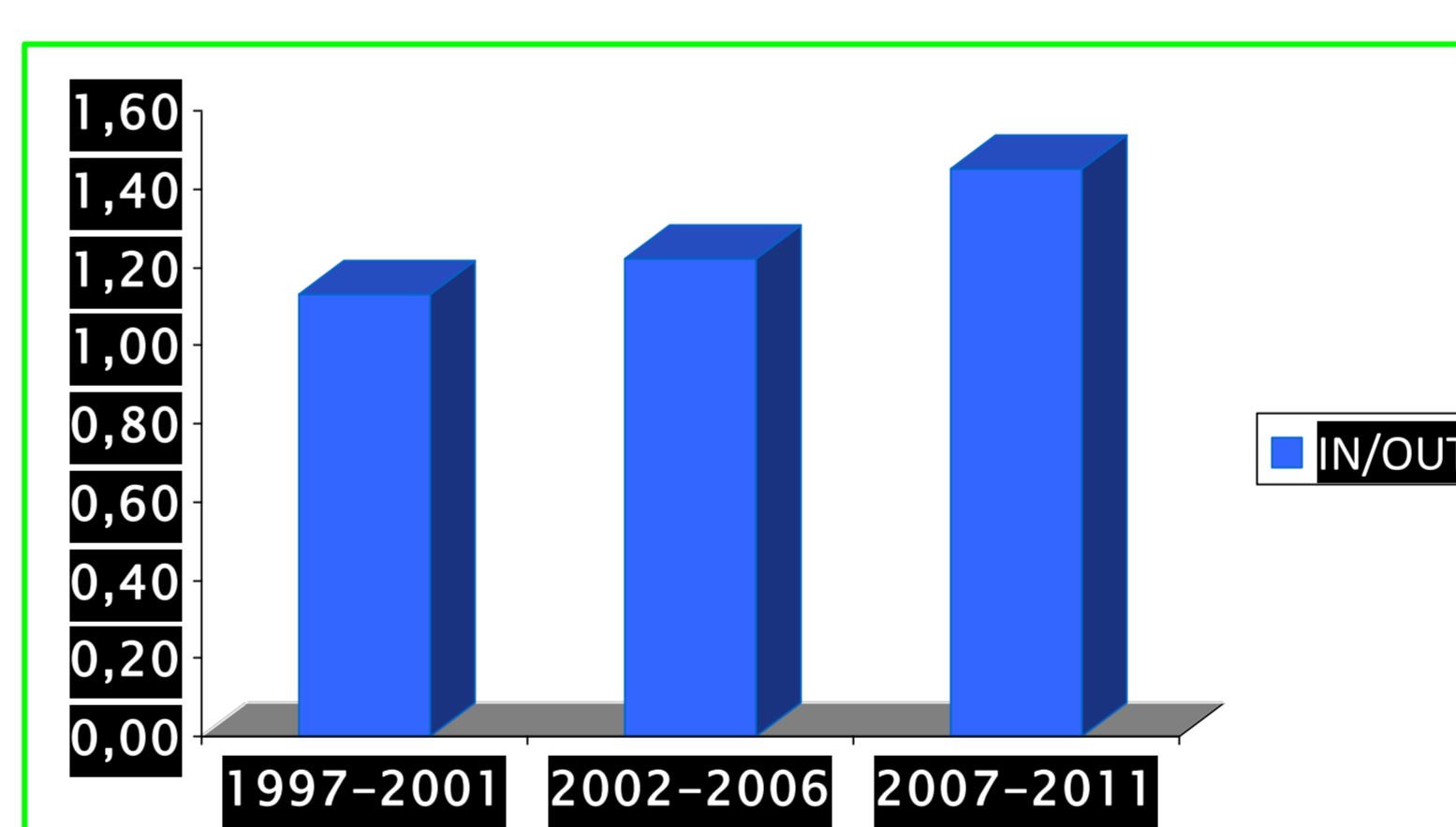
01/01/1992	8.860.344
01/01/1997	8.901.561 (+0.46%)
01/01/2002	9.033.602 (+1.48%)
01/01/2007	9.545.441 (+5.66%)
01/01/2011	9.917.714 (+3.6%)
<b>Total growth</b>	<b>1.057.370 (+11.93%)</b>



### RESULTS (3)

#### CHOICE OF TREATMENT SITES(1997-2011)

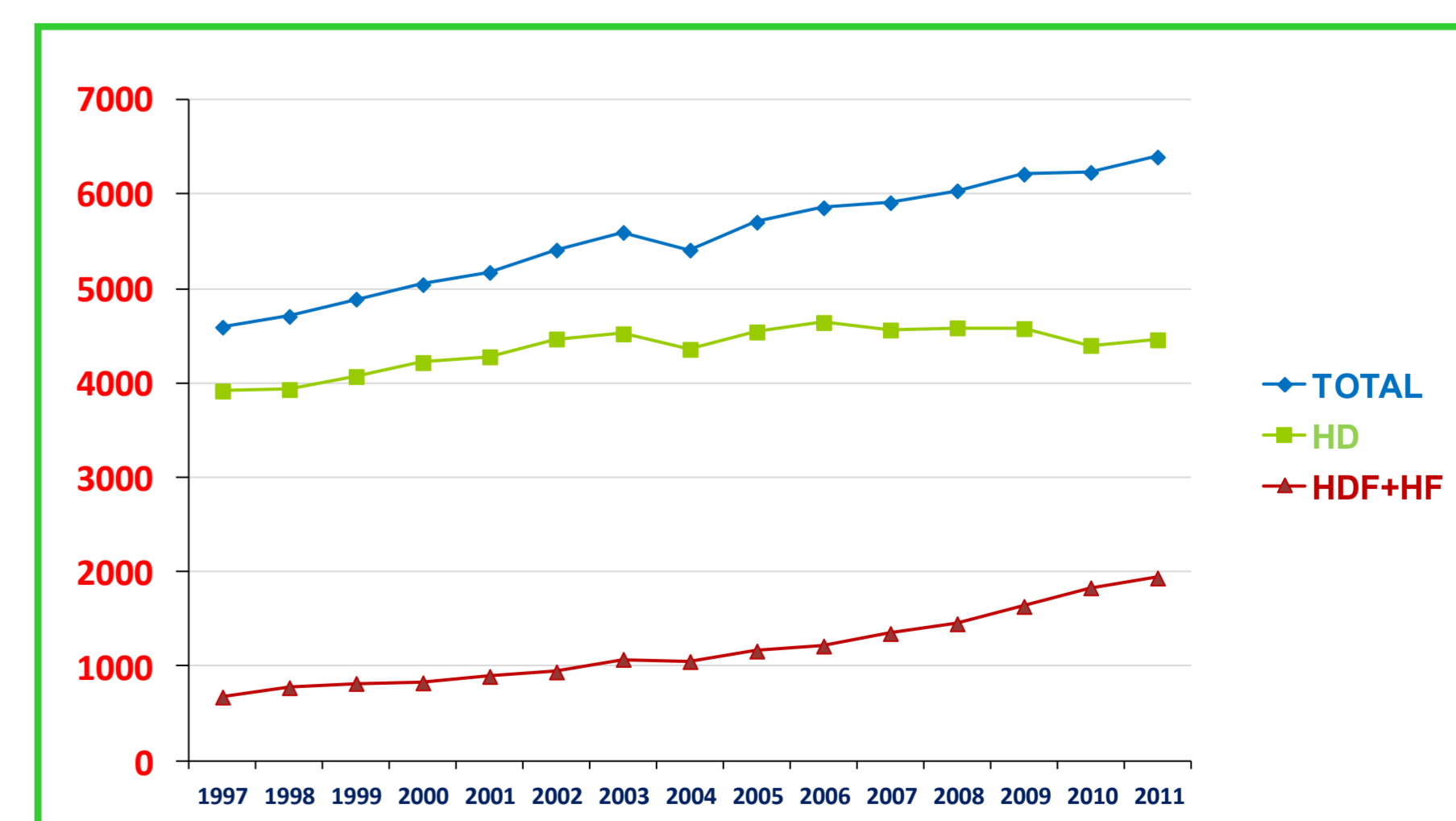
Prevalent patients were treated in hospital-based Dialysis Units and the ratio between hospital vs. limited care treatments increased from 1.12 to 1.48. So, the total increase of prevalent patients may be explained by hospital-treated patients in the last years.



### RESULTS (5)

#### HAEMODIALYSIS MODALITIES PREVALENT PATIENTS (1997-2011)

In the last ten years the increase of prevalent patients (+986 pts) was mainly explained by the increasing of convective and mixed techniques (+995 pts). Especially hemodiafiltration was performed in 26.5% of total dialysis patients.



### ACKNOWLEDGMENTS

This study was realised thanks to the constant cooperation of all the local team members of the Lombard Registry of Dialysis and Transplantation:

P. Ondei (Bergamo), H. S. Giovanni XXIII), F.Ledda (Bergamo, Humanitas), C. Robba (Zingonia), M.Pellizzoni (Ponte S.Pietro), M. Massazza (Treviglio), S.Zerbi (Seriato), V. Vizzardi (Brescia), S. Bove (Montichiari), E. Prati (Desenzano e Gavardo), M. Brognoli (Manerbio), C. Mazzucchelli (Chiari), A. Mangano (Esine), S. Mangano (Como), M.M.Corti (Lecco), V. Ogliari (Crema), P. Ghiringhelli (Cremona), S. Mandolfo (Lodi), M. Baruffaldi (Mantova), M. Seveso (Milano), H. Niguarda), C. Castelnuovo (Milano H. Policlinico), A.Fornasieri (Milano.H. S.Carlo), U.Zoni (Milano H.S.Paolo), D. Scorza (Milano H.Sacco), C.Lanzani (Milano, H. S.Raffaele), G. D'Aloja (Milano, H. Fatebenefratelli), F. Paglialonga (Milano, Clin. de Marchi), D. Brancaccio (Milano, RSA Simone Martini), R.Galato (Milano, RSA S.Faustino), A. Manfredi (Bollate), O. Bracchi (Cernusco s/N), M. Pozzi (Desio), C. Turri (Legnano), M. Cornacchiari (Magenta), S.Finazzi (Rozzano, Humanitas), D. Ciurlino (Sesto.S.G. Multimedica) M. Doria (S.Donato Milanese), P. Serbelloni (Vimercate), G. Lupi (Melegnano), M.C. Miscia (Paderno Dugnano), M.R. Viganò (Monza H. S. Gerardo), C. Ballabeni (Monza, Policlinico), G. Montagna (Pavia Fond Maugeri), A. Dal Canton (Pavia, H.S.Matteo), M. Nai (Vigevano), I. Milani (Voghera), B. Pagliari (Sondrio), I. Brambilla Pisoni (Busto A.), E. Caretta (Gallarate), G. Frattini (Varese), M.B. Zani (Tradate), A. Liccardo (Multimedica Castellanza).